

# C1AP-1G All-in-One GigaBit Ethernet Troubleshooter

## The Ultimate Solution for In-Field Testing & Monitoring

A full featured field service tool, compact and easy to use.

All-in-one in a pocket-sized box, the only additional hardware required being a laptop with a free USB 3.0 port, the C1AP-1G is the perfect tool for the field engineer as well as long-term traffic collection. As it is based on USB 3.0 (5 Gbit/s), the C1AP-1G manages full-duplex Gigabit at wire speed.

### Features

- 10/100/1000 monitoring on USB 3.0
- USB 3.0 powered
- Failure safe monitoring
- Hardware aggregation
- 8 ns hardware timestamp
- Real time statistics
- Low level error and bandwidth monitoring
- Direct capture to disk

### The C1AP-1G has the ability to capture:

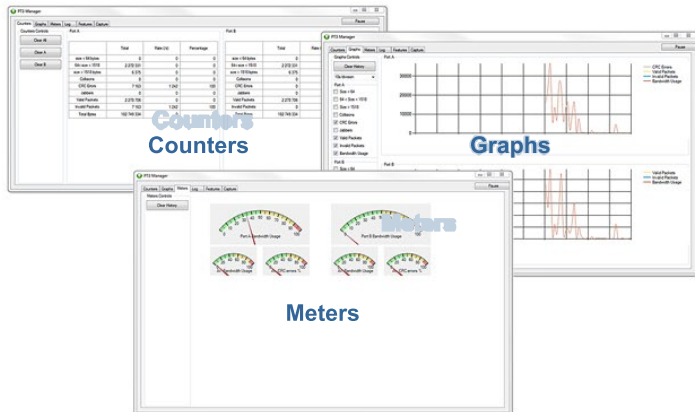
- Any type of frames (pause frames, VLAN tagged, ...)
- Any encapsulated frames
- CRC errors frames
- Any frames between 10 bytes and 10 Kbytes

### Timestamp

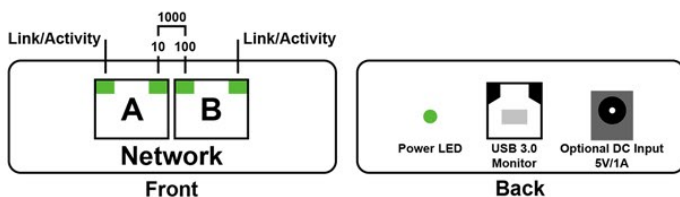
This feature allows real time analysis of aggregated and buffered traffic. It can measure latencies in nanosecond precision.

### PT3 Manager

An application designed specifically for the C1AP-1G. It provides a way for statistical analysis of a network, allowing for efficient excessive bandwidth usage detection, or any low layer errors using charts prior to a deeper investigation with an analyzer.



### General Application



### Connectors

2 x RJ45 8 pins  
1 x USB 3.0 / USB 2.0  
1 x 5V DC optional input

### LEDs

2 x Link activity  
2 x Speed  
1 x Power

### Maximum Network Latency

Link @ 1Gpbs 370 ns  
Link @ 100Mbps 660 ns  
Link @ 10Mbps 6600 ns

### System requirements

Dual Core Processor  
1GB memory  
USB 3.0 port

### Supported OS

Windows 7 32 bits  
Windows 7 64 bits  
Windows 8 32 bits  
Windows 8 64 bits

### Dimensions

Height 24 mm 0.94 inches  
Width 55 mm 2.17 inches  
Length 102 mm 4.02 inches

### Accessories

1.8m USB 3.0 cable  
Pouch  
USB key

### Compliance

RoHS  
CE  
FCC class A

WEE-Reg.-Nr. DE71787154

### Ordering reference

C1AP-1G